



Working together every day

CONTENTS

MANAGEMENT	Dark	8	INDUSTRIAL	Labor	94
	Lady	8		Vera	98
	King	12		Mount	100
	Queen	12		Jack	102
	Oxford	16		Pippo	104
	Dafne	18		Work	106
	Venus	20			
	Luxor	22	CONFERENCE/CONTRACT	Aria	108
	Teknik	24		Conferenza	112
	Prestige	28		Universal	116
	Iris	32		Jolie	118
				Chloé	124
EXECUTIVE	Liberty	34		Vera	130
	Unica	38		Sole	132
	Olimpia	44		Silla	133
	Driade	48		Gimmy	134
	Easy	50		Elena	135
	Désirée	52		Miss	136
	Aura	56		Punto	138
	Orion	60		Gum	139
	Hera	64			
	Comfort	68	SOFAS	Paris	140
	Taylor	72		Max	142
				Duke	144
OPERATIVE	Mirage	76			
	Fantail	78	EXTRAS	Fabrics	146
	Nuvola	80		Colors	149
	Ariel	82		Components	150
	Sofia	86			
	Ergovar	90			

BEHIND every PRODUCT



■ Molding

The most delicate phase where the design melt with technology. In this process a single mistake can compromise months of planning and what makes the difference here is the experience.

Like handcrafted finishes that make a product unique.

■ Design

For us design is not only a pretty package, it is the sum of innovation and sustainability.

We believe in a "goal-oriented" design and for this reason all our products are led by the usability concept.



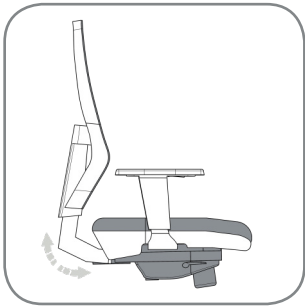
■ People

Behind every great product there are many professionals working together. It is the ability of each one that makes the difference. Some tasks may appear more important than others but like in a puzzle if a piece is missing it can't be completed. With our chairs we try to share the commitment of all the people that have worked in the background. These people are the soul of our brand.

■ Quality

Quality is not only related to the raw material, it is a process that never ends. It flows from all aspects of a brand: it is meticulous production, sustainable choice and customer care. Not all quality parameters can be measured, but each one makes the difference.

GUIDE TO CHOOSING A MECHANISM



SYNCHRO

The synchronized mechanism allows the back and seat to move together. This means that the chair follows the body movement in a natural and ergonomic way and it is suitable for professional and intensive use.

In the synchro mechanism we usually have the following adjustments:

- seat height adjustment
- locking/unlocking of the mechanism
- back lockable in different angles
- adjustment of the intensity of backrest movement

The first three adjustments are controlled by two independent levers, instead, the intensity control is regulated by the knob in the center of the mechanism.



SELF-WEIGHT SYNCHRO

The self-weight mechanism is a synchro mechanism that self-adjusts based on the user weight.

It has the following adjustments:

- seat height adjustment
- locking / unlocking of the mechanism
- back lockable in different angles

We can say that this is certainly a simpler and more intuitive product but with a less refined adjustment of the chair response.

The self-weight mechanism is suitable for professional and continuous usage.



A-SYNCHRO

The asynchronous mechanism allows the user to adjust the backrest and seat independently.

This feature gives an optimal static position of use but does not allow "tilting" as standard synchro.

The asynchro has the following adjustments:

- seat height adjustment
- seat inclination adjustment
- back inclination adjustment
- back lockable in different angles
- integrated back height adjustment

The asynchro mechanism is suitable for professional and intensive usage because it still allows an excellent adjustment of the static sitting position.

The levers on the right side control the seat height and the backrest angle and the one on the left regulates the seat inclination. The back height is regulated by a cut-out mechanism.



BACK-SYSTEM

The "Back-system" is an evolution of the permanent contact mechanism.

It has been designed to easily adjust the backrest angle and height. Unlike the synchro, the seat angle and the back tension can't be changed. It represents a good compromise for most uses.

Those are the characteristic of this mechanism:

- seat height adjustment
- locking/unlocking of the mechanism
- back lockable in different angles
- integrated back height adjustment

The levers control the seat height and the backrest angle. The back height is regulated by a cut-out mechanism.



ADVANCED TILT

The advanced or “knee” tilt is a mechanism that has a rotation axis moved forward compared to a traditional tilt. It is mostly used in armchairs with unique structure and allows superior comfort during the tilt phase. The seat and the backrest inclination does not change during movement.

In this mechanism we usually have the following adjustments:

- seat height adjustment
- locking/unlocking of the mechanism
- adjustment of the mechanism response based on the weight of the user

The tilt mechanism is normally installed in chairs for sporadic use and is not recommended for professional intensive usage.

The right lever controls height, while the left is used to lock/unlock the tilting. The tension of the tilting movement is adjusted with the knob.



TILT

This mechanism allows to tilt on the top of the seat. The backrest and seat are integral to each other, for this reason, the angle between them does not change during movement.

In the oscillating mechanism we usually have the following adjustments:

- seat height adjustment
- locking/unlocking of the mechanism
- adjustment of the mechanism response based on the weight of the user

The tilt mechanism is normally installed in chairs for sporadic use and is not recommended for professional intensive usage.

It only has a single lever to control height and lock/unlock the mechanism, there is also a knob to adjust the tilting tension.



PERMANENT CONTACT

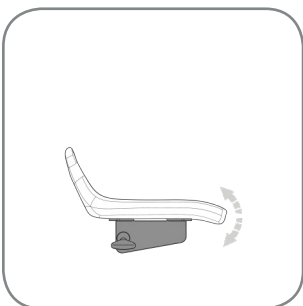
This is an entry-level mechanism that only allows simple settings.

The backrest is controlled by 3 knobs: one for the height, another for the angle adjustment and the last for the depth. A lever on the left side is used to set the seat height.

The permanent contact has the following features:

- seat height adjustment
- back depth adjustment
- back inclination adjustment
- back height adjustment

The CPM is suggested for non-business use or not intensive usage.



FORWARD TILT

The forward tilt mechanism can be tilted a few degrees forward $-3^{\circ}/-5^{\circ}$, so that the angle between the torso and the upper part of the leg can be slightly more open than 90° .

This greater bust-leg angle improves blood circulation and consequently avoids several disturbs like the “heavy legs” or muscle stiffness. It allows a dynamic seating optimal for special tasks that require a non-standard posture and for all those activities that do not require desk support.

Two levers are used to regulate the seat height and inclination.



DARK

LADY



D. Lgs.
81/2008



Specifications



Ergonomic backrest

Ergonomically designed backrest with height adjustment.



Elegant finiture

High quality details.

DARK-LADY

Models



DARK HIGH SYNCHRO

- ☐ Height adjustable backrest
- ☐ Height adjustable armrests
- ☐ Synchronized mechanism



LADY HIGH SYNCHRO

- ☐ Height adjustable backrest
- ☐ Upholstered armrests
- ☐ Synchronized mechanism



DARK SYNCHRO

- ☐ Height adjustable backrest
- ☐ Height adjustable armrests
- ☐ Synchronized mechanism



LADY SYNCHRO

- ☐ Height adjustable backrest
- ☐ Upholstered armrests
- ☐ Synchronized mechanism



DARK CANTILEVER

- ☐ Height adjustable backrest
- ☐ Fixed or height adjustable armrests
- ☐ Black painted cantilever



LADY CANTILEVER

- ☐ Height adjustable backrest
- ☐ Upholstered armrests
- ☐ Black painted cantilever

Options



4D armrests

Soft PU armrests adjustable in 4 directions (available only with DARK models)



Seat slider

Seat depth adjustable.





KING

QUEEN



Specifications



Ergonomic backrest

Ergonomically designed backrest with height adjustment.



Elegant finiture

High quality details.

KING-QUEEN

Models



KING HIGH SYNCHRO

- ☐ Height adjustable backrest
- ☐ Height adjustable armrests
- ☐ Synchronized mechanism



QUEEN HIGH SYNCHRO

- ☐ Height adjustable backrest
- ☐ Upholstered armrests
- ☐ Synchronized mechanism



KING SYNCHRO

- ☐ Height adjustable backrest
- ☐ Height adjustable armrests
- ☐ Synchronized mechanism



QUEEN SYNCHRO

- ☐ Height adjustable backrest
- ☐ Upholstered armrests
- ☐ Synchronized mechanism



KING CANTILEVER

- ☐ Height adjustable backrest
- ☐ Fixed or height adjustable armrests
- ☐ Painted cantilever



QUEEN CANTILEVER

- ☐ Height adjustable backrest
- ☐ Upholstered armrests
- ☐ Painted cantilever

Options



4D armrests

Soft PU armrests adjustable in 4 directions (available only with KING models)



Seat slider

Seat depth adjustable.





OXFORD



D. Lgs.
81/2008



Models

Specifications



OXFORD HIGH

- Height adjustable backrest
- Height adjustable armrests
- Synchronized mechanism



Ergonomic backrest

Ergonomically designed backrest with height adjustment.



OXFORD MEDIUM

- Height adjustable backrest
- Height adjustable armrests
- Synchronized mechanism

Options



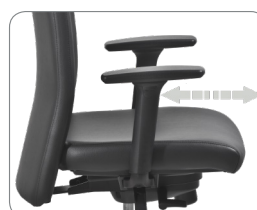
OXFORD CANTILEVER

- Height adjustable armrests
- Painted cantilever



4D armrests

Soft PU armrests adjustable in 4 directions.



Seat slider

Seat depth adjustable.



DAFNE



Models

Specifications



DAFNE HIGH

- Advanced tilt mechanism
- Upholstered armrests with steel structure



DAFNE MEDIUM

- Advanced tilt mechanism
- Upholstered armrests with steel structure



DAFNE CANTILEVER

- Chromed cantilever
- Upholstered armrests with steel structure



High-quality details

High quality seam and material.

Options



Black finish

Soft PU black armrests and reinforced black polyamide base.
Black painted cantilever option available.



VENUS CR



Models

Specifications



VENUS CR HIGH

- Tilt mechanism
- Chromed steel armrest with matched upholstery padding
- Upholstered armrests with steel structure



VENUS CR MEDIUM

- Tilt mechanism
- Chromed steel armrest with matched upholstery padding
- Upholstered armrests with steel structure



VENUS CR CANTILEVER

- Chromed cantilever
- Chromed steel armrest with matched upholstery padding
- Upholstered armrests with steel structure



High-quality details

High quality seam and material.

Options



Black finish

Soft PU black armrests and reinforced polyamide black base.
Black painted cantilever option available.



LUXOR



Models



LUXOR-PU HIGH

- ☑ Advanced tilt mechanism
- ☑ Leather upholstery
- ☑ Chromed steel frame
- ☑ Chromed steel fixed armrests



LUXOR-R HIGH

- ☑ Advanced tilt mechanism
- ☑ Mesh upholstery
- ☑ Chromed steel frame
- ☑ Chromed steel fixed armrests



LUXOR-PU MEDIUM

- ☑ Advanced tilt mechanism
- ☑ Leather upholstery
- ☑ Chromed steel frame
- ☑ Chromed steel fixed armrests



LUXOR-R MEDIUM

- ☑ Advanced tilt mechanism
- ☑ Mesh upholstery
- ☑ Chromed steel frame
- ☑ Chromed steel fixed armrests



LUXOR-PU CANTILEVER

- ☑ Chromed cantilever
- ☑ Leather upholstery
- ☑ Chromed steel fixed armrests



LUXOR-R CANTILEVER

- ☑ Chromed cantilever
- ☑ Mesh upholstery
- ☑ Chromed steel fixed armrests



TEKNIK



Models



TEKNİK-C HIGH

- ☑ Tilting mechanism
- ☑ Chromed frame
- ☑ Leather upholstery
- ☑ Thick padded cushion
- ☑ Chromed steel fixed armrests



TEKNİK-C MEDIUM

- ☑ Tilting mechanism
- ☑ Chromed frame
- ☑ Leather upholstery
- ☑ Thick padded cushion
- ☑ Chromed steel fixed armrests



TEKNİK-C CANTILEVER

- ☑ Chromed cantilever
- ☑ Leather upholstery
- ☑ Thick padded cushion
- ☑ Chromed steel fixed armrests

Specifications



Chromed frame

High quality chromed steel frame.

Options



Multiple finishes

Wide selection of leathers available.



Models



TEKNIK-R HIGH

- ☐ Tilting mechanism
- ☐ Chromed frame
- ☐ Mesh upholstery
- ☐ Chromed steel fixed armrests



TEKNIK-R MEDIUM

- ☐ Tilting mechanism
- ☐ Chromed frame
- ☐ Mesh upholstery
- ☐ Chromed steel fixed armrests



TEKNIK-R CANTILEVER

- ☐ Chromed cantilever
- ☐ Mesh upholstery
- ☐ Chromed steel fixed armrests

Specifications



Chromed frame

High quality chromed steel frame.

Options



Multiple meshes

Wide selection of meshes available.



Models



TEKNIK-T HIGH

- ☑ Tilting mechanism
- ☑ Chromed frame
- ☑ Leather upholstery
- ☑ Chromed steel fixed armrests



TEKNIK-T MEDIUM

- ☑ Tilting mechanism
- ☑ Chromed frame
- ☑ Leather upholstery
- ☑ Chromed steel fixed armrests



TEKNIK-T CANTILEVER

- ☑ Chromed cantilever
- ☑ Leather upholstery
- ☑ Chromed steel fixed armrests

Specifications



Chromed frame

High quality chromed steel frame.

Options



Multiple finishes

Wide selection of leathers available.



PRESTIGE



Specifications



Classy frame

High strength chromed steel frame.



Double mesh

High quality mesh with two different bands to improve seating comfort.



Ergonomic backrest

Ergonomically designed backrest with head support.

PRESTIGE

Models



PRESTIGE HIGH

- ☑ Height adjustable armrests
- ☑ Head support
- ☑ Double layer mesh
- ☑ Chromed steel backrest frame
- ☑ Synchronized mechanism



PRESTIGE MEDIUM

- ☑ Height adjustable armrests
- ☑ Double layer mesh
- ☑ Chromed steel backrest frame
- ☑ Synchronized mechanism



PRESTIGE CANTILEVER

- ☑ Height adjustable armrests
- ☑ Double layer mesh
- ☑ Chromed steel backrest frame
- ☑ Painted cantilever



PRESTIGE 4-LEGS FRAME

- ☑ Height adjustable armrests
- ☑ Double layer mesh
- ☑ Chromed steel backrest frame
- ☑ Painted 4-legs frame

Options



4D armrests

Soft PU armrests adjustable in 4 directions.



Seat slider

Seat depth adjustable.





IRIS



D.Lgs.
81/2008



Models

Specifications



IRIS HIGH

- ☑ Height adjustable backrest
- ☑ Height adjustable armrests
- ☑ Synchronized mechanism



Ergonomic backrest

Ergonomically designed backrest with height adjustment.



IRIS MEDIUM

- ☑ Height adjustable backrest
- ☑ Height adjustable armrests
- ☑ Synchronized mechanism

Options



IRIS CANTILEVER

- ☑ Height adjustable armrests
- ☑ Chromed cantilever



4D armrests

Soft PU armrests adjustable in 4 directions.



Seat slider

Seat depth adjustable.



LIBERTY



D. Lgs.
81/2008

CAM
CERTIFICAZIONE
✓

Specifications



Headrest
Angle and height adjustment.



Lumbar support
Adjustable in height and with flexible flaps for a naturally improved comfort.



Ergonomic backrest
Ergonomically designed backrest with height adjustment lumbar support.

LIBERTY

Models



LIBERTY SYNCHRO WITH HEADREST

- Adjustable headrest
- Height adjustable lumbar support
- Height adjustable armrests
- Synchronized mechanism



LIBERTY SYNCHRO WITH HEADREST

- Adjustable headrest
- Height adjustable lumbar support
- Height adjustable armrests
- Synchronized mechanism



LIBERTY SYNCHRO

- Height adjustable lumbar support
- Height adjustable armrests
- Synchronized mechanism



LIBERTY SYNCHRO

- Height adjustable lumbar support
- Height adjustable armrests
- Synchronized mechanism

Options



4D armrests

Soft PU armrests adjustable in 4 directions.



Seat slider

Seat depth adjustable.





UNICA



Specifications



Headrest
Angle and height adjustment.



Lumbar support
Soft and flexible TPV lumbar support. Adjustable in height with the backrest.



Ergonomic backrest
Ergonomically designed backrest with height adjustment.



UNICA



GREY



WHITE

UNICA

Models



UNICA SYNCHRO WITH HEADREST

- ☑ Adjustable headrest
- ☑ Lumbar support
- ☑ Height adjustable backrest
- ☑ Height adjustable armrests
- ☑ Synchronized mechanism



UNICA BACKSYSTEM WITH HEADREST

- ☑ Adjustable headrest
- ☑ Lumbar support
- ☑ Height adjustable backrest
- ☑ Height adjustable armrests
- ☑ 2 levers permanent contact. Backrest adjustable in all positions



UNICA SYNCHRO

- ☑ Height adjustable backrest
- ☑ Lumbar support
- ☑ Height adjustable armrests
- ☑ Synchronized mechanism



UNICA BACKSYSTEM

- ☑ Height adjustable backrest
- ☑ Lumbar support
- ☑ Height adjustable armrests
- ☑ 2 levers permanent contact. Backrest adjustable in all positions



UNICA CANTILEVER

- ☑ Height adjustable armrests
- ☑ Lumbar support
- ☑ Painted cantilever



UNICA 4-LEGS FRAME

- ☑ Height adjustable armrests
- ☑ Lumbar support
- ☑ Painted 4-legs frame



UNICA SYNCHRO

- ☑ Height adjustable backrest
- ☑ Lumbar support
- ☑ Height adjustable armrests
- ☑ Synchronized mechanism



UNICA BACKSYSTEM

- ☑ Height adjustable backrest
- ☑ Lumbar support
- ☑ Height adjustable armrests
- ☑ 2 levers permanent contact. Backrest adjustable in all positions



UNICA SYNCHRO

- ☑ Height adjustable backrest
- ☑ Lumbar support
- ☑ Height adjustable armrests
- ☑ Synchronized mechanism



UNICA BACKSYSTEM

- ☑ Height adjustable backrest
- ☑ Lumbar support
- ☑ Height adjustable armrests
- ☑ 2 levers permanent contact. Backrest adjustable in all positions

Options



Mesh seat

Ergonomic mesh seat.



Seat slider

Seat depth adjustable. Available for Synchro and Back-system mechanisms.



4D armrests

Soft PU armrests adjustable in 4 directions.



OLIMPIA



Specifications

D. Lgs.
81/2008



Lumbar support

Flexible and adjustable in height.



Headrest

Height adjustment.

OLIMPIA

Models



OLIMPIA-R SYNCHRO WITH HEADREST

- ☑ Adjustable headrest
- ☑ Height adjustable lumbar support
- ☑ Height adjustable armrests
- ☑ Synchronized mechanism
- ☑ Mesh seat



OLIMPIA SYNCHRO WITH HEADREST

- ☑ Adjustable headrest
- ☑ Height adjustable lumbar support
- ☑ Height adjustable armrests
- ☑ Synchronized mechanism



OLIMPIA-R SYNCHRO

- ☑ Height adjustable lumbar support
- ☑ Synchronized mechanism
- ☑ Mesh seat



OLIMPIA SYNCHRO

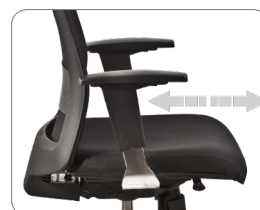
- ☑ Height adjustable lumbar support
- ☑ Height adjustable armrests
- ☑ Synchronized mechanism

Options



4D armrests

Soft PU armrests adjustable in 4 directions.



Seat slider

Seat depth adjustable.





DRIADE



D. Lgs.
81/2008



Models



DRIADE SYNCHRO WITH HEADREST

- ☑ Adjustable headrest
- ☑ Height adjustable lumbar support
- ☑ Synchronized mechanism



DRIADE SYNCHRO

- ☑ Height adjustable lumbar support
- ☑ Synchronized mechanism

Specifications



Lumbar support

Upholstered, flexible and adjustable in height.



Headrest

Angle and height adjustment.



EASY



Models

Specifications



EASY SYNCHRO WITH HEADREST

- ☑ Height adjustable backrest
- ☑ Height adjustable armrests
- ☑ Adjustable headrest
- ☑ Synchronized mechanism



EASY SYNCHRO

- ☑ Height adjustable backrest
- ☑ Height adjustable armrests
- ☑ Synchronized mechanism



EASY CANTILEVER

- ☑ Height adjustable armrests
- ☑ Painted cantilever



Double-layer mesh

High quality mesh supported by a chromed steel frame.



Headrest

Angle and height adjustment.



DESIREE



D. Lgs.
81/2008

CAM
CERTIFICATO
✓

Specifications



Ergonomic backrest

Ergonomically designed backrest with height adjustment.



Headrest

Angle and height adjustment.

DESIRÉE

Models



DÉSIRÉE SYNCHRO WITH HEADREST

- ☐ Adjustable headrest
- ☐ Height adjustable backrest
- ☐ Height adjustable armrests
- ☐ Synchronized mechanism



DÉSIRÉE SYNCHRO

- ☐ Height adjustable backrest
- ☐ Height adjustable armrests
- ☐ Synchronized mechanism



Options



4D armrests

Soft PU armrests adjustable in 4 directions.



Seat slider

Seat depth adjustable.





AURA



Specifications



Ergonomic backrest

Ergonomically designed backrest with height adjustment.



Headrest

Angle and height adjustment.

AURA

Models



AURA SYNCHRO WITH HEADREST

- ☐ Adjustable headrest
- ☐ Height adjustable backrest
- ☐ Height adjustable armrests
- ☐ Synchronized mechanism



AURA BACKSYSTEM WITH HEADREST

- ☐ Adjustable headrest
- ☐ Height adjustable backrest
- ☐ Height adjustable armrests
- ☐ 2 levers permanent contact. Backrest adjustable in all positions



AURA SYNCHRO

- ☐ Height adjustable backrest
- ☐ Height adjustable armrests
- ☐ Synchronized mechanism



AURA BACKSYSTEM

- ☐ Height adjustable backrest
- ☐ Height adjustable armrests
- ☐ 2 levers permanent contact. Backrest adjustable in all positions



AURA CANTILEVER

- ☐ Height adjustable armrests
- ☐ Painted cantilever



AURA 4-LEGS FRAME

- ☐ Height adjustable armrests
- ☐ Painted 4-legs frame

Options



4D armrests

Soft PU armrests adjustable in 4 directions.



Seat slider

Seat depth adjustable. Available for Synchro and Back-system mechanisms.



AURA SYNCHRO

- ☑ Height adjustable backrest
- ☑ Height adjustable armrests
- ☑ Synchronized mechanism



AURA BACKSYSTEM

- ☑ Height adjustable backrest
- ☑ Height adjustable armrests
- ☑ 2 levers permanent contact. Backrest adjustable in all positions



AURA SYNCHRO

- ☑ Height adjustable backrest
- ☑ Height adjustable armrests
- ☑ Synchronized mechanism



AURA BACKSYSTEM

- ☑ Height adjustable backrest
- ☑ Height adjustable armrests
- ☑ 2 levers permanent contact. Backrest adjustable in all positions





ORION



Specifications



Headrest

Height adjustable headrest.
Available in two sizes: regular and large.



Ergonomic backrest

Ergonomically designed backrest with height adjustment.

ORION

Models



ORION SYNCHRO WITH HEADREST

- ☐ Adjustable headrest
- ☐ Height adjustable backrest
- ☐ Height adjustable armrests
- ☐ Synchronized mechanism



ORION BACKSYSTEM WITH HEADREST

- ☐ Adjustable headrest
- ☐ Height adjustable backrest
- ☐ Height adjustable armrests
- ☐ 2 levers permanent contact. Backrest adjustable in all positions



ORION SYNCHRO

- ☐ Height adjustable backrest
- ☐ Height adjustable armrests
- ☐ Synchronized mechanism



ORION BACKSYSTEM

- ☐ Height adjustable backrest
- ☐ Height adjustable armrests
- ☐ 2 levers permanent contact. Backrest adjustable in all positions



ORION CANTILEVER

- ☐ Height adjustable armrests
- ☐ Painted cantilever



ORION 4-LEGS FRAME

- ☐ Height adjustable armrests
- ☐ Painted 4-legs frame

Options



4D armrests

Soft PU armrests adjustable in 4 directions.



Seat slider

Seat depth adjustable. Available with synchro and Back-system mechanisms.





HERA



Specifications



Headrest
Height adjustable headrest.



Ergonomic backrest
Ergonomically designed backrest with height adjustment.

HERA

Models



HERA SYNCHRO WITH HEADREST

- ☑ Adjustable headrest
- ☑ Height adjustable backrest
- ☑ Height adjustable armrests
- ☑ Synchronized mechanism



HERA BACKSYSTEM WITH HEADREST

- ☑ Adjustable headrest
- ☑ Height adjustable backrest
- ☑ Height adjustable armrests
- ☑ 2 levers permanent contact. Backrest adjustable in all positions



HERA SYNCHRO

- ☑ Height adjustable backrest
- ☑ Height adjustable armrests
- ☑ Synchronized mechanism



HERA BACKSYSTEM

- ☑ Height adjustable backrest
- ☑ Height adjustable armrests
- ☑ 2 levers permanent contact. Backrest adjustable in all positions



HERA CANTILEVER

- ☑ Height adjustable armrests
- ☑ Painted cantilever



HERA 4-LEGS FRAME

- ☑ Height adjustable armrests
- ☑ Painted 4-legs frame

Options



4D armrests

Soft PU armrests adjustable in 4 directions.



Seat slider

Seat depth adjustable. Available with synchro and Back-system mechanisms.





COMFORT



Specifications



Headrest
Height adjustable headrest.

Ergonomic backrest
Ergonomically designed backrest with height adjustment.

COMFORT

Models



COMFORT SYNCHRO WITH HEADREST

- Adjustable headrest
- Height adjustable backrest
- Height adjustable armrests
- Synchronized mechanism



COMFORT BACKSYSTEM WITH HEADREST

- Adjustable headrest
- Height adjustable backrest
- Height adjustable armrests
- 2 levers permanent contact. Backrest adjustable in all positions



COMFORT SYNCHRO

- Adjustable headrest
- Height adjustable backrest
- Synchronized mechanism



COMFORT BACKSYSTEM

- Height adjustable backrest
- Height adjustable armrests
- 2 levers permanent contact. Backrest adjustable in all positions



COMFORT CANTILEVER

- Height adjustable armrests
- Painted cantilever



COMFORT 4-LEGS FRAME

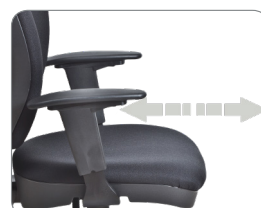
- Height adjustable armrests
- Painted 4-legs frame

Options



4D armrests

Soft PU armrests adjustable in 4 directions.



Seat slider

Seat depth adjustable. Available with synchro and Back-system mechanisms.





TAYLOR



Specifications



Ergonomic backrest

Ergonomically designed backrest with height adjustment.



Headrest

Angle and height adjustment.

TAYLOR

Models



TAYLOR SYNCHRO WITH HEADREST

- ☐ Adjustable headrest
- ☐ Height adjustable backrest
- ☐ Height adjustable armrests
- ☐ Synchronized mechanism



TAYLOR BACKSYSTEM WITH HEADREST

- ☐ Adjustable headrest
- ☐ Height adjustable backrest
- ☐ Height adjustable armrests
- ☐ 2 levers permanent contact. Backrest adjustable in all positions



TAYLOR SYNCHRO

- ☐ Height adjustable backrest
- ☐ Height adjustable armrests
- ☐ Synchronized mechanism



TAYLOR BACKSYSTEM

- ☐ Height adjustable backrest
- ☐ Height adjustable armrests
- ☐ 2 levers permanent contact. Backrest adjustable in all positions



TAYLOR CANTILEVER

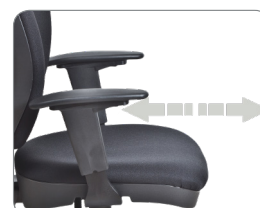
- ☐ Height adjustable armrests
- ☐ Chromed cantilever

Options



4D armrests

Soft PU armrests adjustable in 4 directions.



Seat slider

Seat depth adjustable. Available with synchro and Back-system mechanisms.





MIRAGE



Models



- MIRAGE SYNCHRO**
- ☐ Height adjustable backrest
 - ☐ Height adjustable armrests
 - ☐ Synchronized mechanism



- MIRAGE BACKSYSTEM**
- ☐ Height adjustable backrest
 - ☐ Height adjustable armrests
 - ☐ Two levers permanent contact.
 - ☐ Backrest adjustable in all positions



- MIRAGE CPM**
- ☐ Height adjustable backrest
 - ☐ Height adjustable armrests
 - ☐ Permanent contact

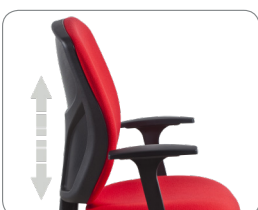


- MIRAGE 4-LEGS FRAME**
- ☐ Height adjustable armrests
 - ☐ Painted 4-legs frame



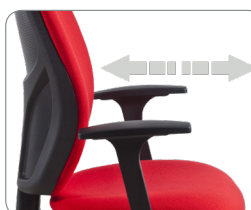
- MIRAGE CANTILEVER**
- ☐ Height adjustable armrests
 - ☐ Painted cantilever

Specifications



Ergonomic backrest
Ergonomically designed backrest with height adjustment.

Options



Seat slider
Seat depth adjustable. Available for Synchro and Back-system mechanisms.



FANTAIL



D. Lgs.
81/2008



Models



FANTAIL SYNCHRO

- Height adjustable backrest
- Height adjustable armrests
- Synchronized mechanism



FANTAIL BACKSYSTEM

- Height adjustable backrest
- Height adjustable armrests
- Two levers permanent contact.
- Backrest adjustable in all positions



FANTAIL CPM

- Height adjustable backrest
- Height adjustable armrests
- Permanent contact



FANTAIL 4-LEGS FRAME

- Height adjustable armrests
- Painted 4-legs frame



FANTAIL CANTILEVER

- Height adjustable armrests
- Painted cantilever

Specifications



Ergonomic backrest

Ergonomically designed backrest with height adjustment.

Options



Seat slider

Seat depth adjustable. Available for Synchro and Back-system mechanisms.



NUVOLA



Models



NUVOLA SYNCHRO

- ☑ Height adjustable backrest
- ☑ Height adjustable armrests
- ☑ Synchronized mechanism



NUVOLA BACKSYSTEM

- ☑ Height adjustable backrest
- ☑ Height adjustable armrests
- ☑ Two levers permanent contact.
- ☑ Backrest adjustable in all positions



NUVOLA CPM

- ☑ Height adjustable backrest
- ☑ Height adjustable armrests
- ☑ Permanent contact



NUVOLA 4-LEGS FRAME

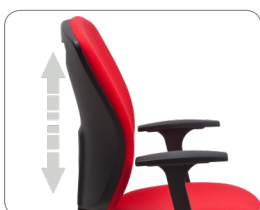
- ☑ Height adjustable backrest
- ☑ Height adjustable armrests
- ☑ Painted 4-legs frame



NUVOLA CANTILEVER

- ☑ Height adjustable backrest
- ☑ Height adjustable armrests
- ☑ Painted cantilever

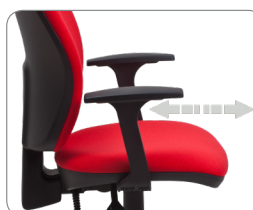
Specifications



Ergonomic backrest

Ergonomically designed backrest with height adjustment.

Options



Seat slider

Seat depth adjustable. Available for Synchro and Back-system mechanisms.



ARIEL



Specifications



3 different models
Backrest available in three different sizes:
High - Medium - Small.

Ergonomic backrest
Ergonomically designed backrest with height
adjustment.

ARIEL

Models



ARIEL HIGH 07 SYNCHRO

- ☐ Adjustable headrest
- ☐ Height adjustable backrest
- ☐ Height adjustable armrests
- ☐ Synchronized mechanism



ARIEL HIGH BACKSYSTEM

- ☐ Height adjustable backrest
- ☐ Height adjustable armrests
- ☐ Two levers permanent contact
- ☐ Backrest adjustable in all positions



ARIEL MEDIUM 07 SYNCHRO

- ☐ Height adjustable backrest
- ☐ Height adjustable armrests
- ☐ Synchronized mechanism



ARIEL MEDIUM BACKSYSTEM

- ☐ Height adjustable backrest
- ☐ Height adjustable armrests
- ☐ Two levers permanent contact
- ☐ Backrest adjustable in all positions



ARIEL HIGH SYNCHRO

- ☐ Height adjustable armrests
- ☐ Painted cantilever



ARIEL SMALL BACKSYSTEM

- ☐ Height adjustable backrest
- ☐ Height adjustable armrests
- ☐ Two levers permanent contact
- ☐ Backrest adjustable in all positions



ARIEL MEDIUM SYNCHRO

- ☐ Adjustable headrest
- ☐ Height adjustable backrest
- ☐ Height adjustable armrests
- ☐ Synchronized mechanism



ARIEL CANTILEVER

- ☐ Height adjustable armrests
- ☐ Painted cantilever



ARIEL 4-LEGS FRAME

- ☐ Height adjustable armrests
- ☐ Painted 4-legs frame



ARIEL DESIGNER BACKSYSTEM

- ☐ Height adjustable backrest
- ☐ Height adjustable footring
- ☐ Two levers permanent contact
- ☐ Backrest adjustable in all positions

Options



4D armrests

Soft PU armrests adjustable in 4 directions.



Seat slider

Seat depth adjustable. Available with synchro and Back-system mechanisms.



A-Synchro

A-Synchro mechanism with 3 levers. Seat and back adjustable separately.



Footring

Chromed steel ring with polyamide support. Easily adjustable with lever. Included in all DESIGNER version.



SOFIA



Specifications



Back-system BS
Ergonomically designed backrest with levers to adjust height and angle.



Permanent contact CPM
Ergonomically designed backrest with handwheels to adjust height, angle and depth.

SOFIA

Models



SOFIA HIGH BACKSYSTEM

- ☑ Height adjustable backrest
- ☑ Height adjustable armrests
- ☑ Two levers permanent contact
- ☑ Backrest adjustable in all positions



SOFIA SMALL BACKSYSTEM

- ☑ Height adjustable backrest
- ☑ Height adjustable armrests
- ☑ Two levers permanent contact
- ☑ Backrest adjustable in all positions



SOFIA HIGH CPM

- ☑ Height adjustable backrest
- ☑ Height adjustable armrests
- ☑ Permanent contact



SOFIA 4-LEGS FRAME

- ☑ Height adjustable armrests
- ☑ Painted 4-legs frame



SOFIA CANTILEVER

- ☑ Height adjustable backrest
- ☑ Painted cantilever



SOFIA-B DESIGNER

- ☑ Height adjustable backrest
- ☑ Height adjustable footring
- ☑ Two levers permanent contact
- ☑ Backrest adjustable in all positions

Options



4D armrests

Soft PU armrests adjustable in 4 directions.



Seat slider

Seat depth adjustable. Available with Back-system mechanism.



A-Synchro

A-Synchro mechanism with 3 levers. Seat and back adjustable separately.



Footring

Chromed steel ring with polyamide support. Easily adjustable with lever. Included in all DESIGNER version.





ERGOVAR



Specifications



Back-system BS

Ergonomically designed backrest with levers to adjust height and angle.



Permanent contact CPM

Ergonomically designed backrest with handwheels to adjust height, angle and depth.

ERGOVAR

Models



ERGOVAR BACKSYSTEM

- ☐ Height adjustable backrest
- ☐ Height adjustable armrests
- ☐ Two levers permanent contact
- ☐ Backrest adjustable in all positions



ERGOVAR CPM

- ☐ Height adjustable backrest
- ☐ Height adjustable armrests
- ☐ Permanent contact



ERGOVAR CANTILEVER

- ☐ Height adjustable backrest
- ☐ Height adjustable armrests
- ☐ Painted cantilever



ERGOVAR 4-LEGS FRAME

- ☐ Height adjustable backrest
- ☐ Height adjustable armrests
- ☐ Painted 4-legs frame



ERGOVAR DESIGNER BACKSYSTEM

- ☐ Height adjustable backrest
- ☐ Height adjustable footring
- ☐ Two levers permanent contact
- ☐ Backrest adjustable in all positions



ERGOVAR DESIGNER CPM

- ☐ Height adjustable backrest
- ☐ Height adjustable footring
- ☐ Permanent contact

Options



4D armrests

Soft PU armrests adjustable in 4 directions.



Seat slider

Seat depth adjustable. Available with synchro and Back-system mechanisms.



A-Synchro

A-Synchro mechanism with 3 levers. Seat and back adjustable separately.



Footring

Chromed steel ring with polyamide support. Included in all DESIGNER version.





LABOR



Specifications



Back-system BS

Ergonomically designed backrest with height and angle adjustment.



Permanent contact CPM

Handwheel for backrest depth adjustment.

LABOR

Models



LABOR PU 60 WITH FOOTRING

- ☑ Height adjustable backrest
- ☑ Adjustable seat from 560 to 820mm
- ☑ Height adjustable footring
- ☑ Two levers permanent contact
- ☑ Backrest adjustable in all positions



LABOR WOOD 60 WITH FOOTRING

- ☑ Depth adjustable backrest
- ☑ Adjustable seat from 560 to 820mm
- ☑ Height adjustable footring



LABOR PU 50

- ☑ Height adjustable backrest
- ☑ Adjustable seat from 500 to 700mm
- ☑ Two levers permanent contact
- ☑ Backrest adjustable in all positions



LABOR WOOD 50

- ☑ Depth adjustable backrest
- ☑ Adjustable seat from 500 to 700mm



LABOR PU 40

- ☑ Height adjustable backrest
- ☑ Adjustable seat from 430 to 560mm
- ☑ Two levers permanent contact
- ☑ Backrest adjustable in all positions



LABOR WOOD 40

- ☑ Depth adjustable backrest
- ☑ Adjustable seat from 430 to 560mm

Options



A-Synchro

A-Synchro mechanism with 3 levers. Seat and back adjustable separately.



Footring

Chromed steel ring with polyamide support. Included in all DESIGNER version.





VERA



Models



VERA 60 WITH FOOTRING

- ☐ Polypropylene shell
- ☐ Adjustable seat from 560 to 820mm
- ☐ Height adjustable footring



VERA 40

- ☐ Polypropylene shell
- ☐ Adjustable seat from 430 to 560mm



VERA 50

- ☐ Polypropylene shell
- ☐ Adjustable seat from 500 to 700mm

Specifications



Easy-care

Easily cleanable and scratchproof material, 100% recyclable.

Options



Footring

Chromed steel ring with polyamide support. Easily adjustable with lever.



MOUNT



Models



MOUNT 60 WITH FOOTRING

- ☐ Height adjustable seat from 560mm to 820mm
- ☐ Height adjustable footring
- ☐ Fixed glides



MOUNT 40

- ☐ Height adjustable seat from 430mm to 560mm
- ☐ Castors or fixed glides



MOUNT 50

- ☐ Height adjustable seat from 500mm to 700mm
- ☐ Castors or fixed glides

Options



Seat tilting mechanism

Forward tilting mechanism with lever. Adjustable in all positions.



Footring

Chromed steel ring with polyamide support. Easily adjustable with lever.



JACK



Models



JACK 60 WITH FOOTRING

- ☐ Height adjustable seat from 560mm to 820mm
- ☐ Low back support
- ☐ Height adjustable footring
- ☐ Fixed glides



JACK 40

- ☐ Height adjustable seat from 430mm to 560mm
- ☐ Low back support
- ☐ Castors or fixed glides



JACK 50

- ☐ Height adjustable seat from 500mm to 700mm
- ☐ Low back support
- ☐ Castors or fixed glides

Options



Seat tilting mechanism

Forward tilting mechanism with lever. Adjustable in all positions.



Footring

Chromed steel ring with polyamide support. Easily adjustable with lever.



PIPPO



Models



PIPPO 60 WITH FOOTRING

- ☐ Height adjustable seat from 560mm to 820mm
- ☐ Low back support
- ☐ Height adjustable footring
- ☐ Fixed glides



PIPPO 40

- ☐ Height adjustable seat from 430mm to 560mm
- ☐ Low back support
- ☐ Castors or fixed glides



PIPPO 50

- ☐ Height adjustable seat from 500mm to 700mm
- ☐ Low back support
- ☐ Castors or fixed glides

Options



Seat tilting mechanism

Forward tilting mechanism with lever. Adjustable in all positions.



Footring

Chromed steel ring with polyamide support. Easily adjustable with lever.



WORK



Models



WORK PU 60 WITH FOOTRING

- ☐ Polyurethane seat
- ☐ Adjustable seat from 560 to 820mm
- ☐ Height adjustable footring



WORK WOOD 60 WITH FOOTRING

- ☐ Plywood seat
- ☐ Adjustable seat from 560 to 820mm
- ☐ Height adjustable footring



WORK PU 50

- ☐ Polyurethane seat
- ☐ Adjustable seat from 500 to 700mm



WORK WOOD 50

- ☐ Plywood seat
- ☐ Adjustable seat from 500 to 700mm



WORK PU 40

- ☐ Polyurethane seat
- ☐ Adjustable seat from 430 to 560mm



WORK WOOD 40

- ☐ Plywood seat
- ☐ Adjustable seat from 430 to 560mm

Specifications



Polyurethane or wood

Available in two different version:

- PU - integral polyurethane
- WOOD - Beech plywood

Options



Footring

Chromed steel ring with polyamide support. Easily adjustable with lever.



ARIA



UNI EN 13761- 2002	UNI EN 15373- 2007	UNI EN 1728- 2000	UNI EN 9083- 1987	UNI EN 1022- 2005	UNI EN 16139- 2013
--------------------------	--------------------------	-------------------------	-------------------------	-------------------------	--------------------------

Specifications



Multiple solutions

Available in 3 different finishes:

- Polypropylene seat and back
- Polypropylene back and upholstered seat
- Upholstered seat and back

All finishes can have 4-legs frame, swivel base or bench support.



Stackable

Stackable up to 20 chairs even with armrests or tablet.

ARIA

Models



ARIA PLASTIC 4-LEGS FRAME

- ☐ Polypropylene seat and back
- ☐ Painted 4-legs frame
- ☐ Available with fireproof padding and inner plastic



ARIA PLASTIC SWIVEL

- ☐ Polypropylene seat and back
- ☐ Polyamide base with castors
- ☐ Available with fireproof padding and inner plastic



ARIA UPHOLSTERED SEAT 4-LEGS FRAME

- ☐ Upholstered seat and polypropylene back
- ☐ Painted 4-legs frame
- ☐ Available with fireproof padding and inner plastic



ARIA UPHOLSTERED SEAT SWIVEL

- ☐ Upholstered seat and polypropylene back
- ☐ Polyamide base and castors
- ☐ Available with fireproof padding and inner plastic



ARIA UPHOLSTERED 4-LEGS FRAME

- ☐ Upholstered seat and back
- ☐ Painted 4-legs frame
- ☐ Available with fireproof padding and inner plastic



ARIA UPHOLSTERED SWIVEL

- ☐ Upholstered seat and back
- ☐ Polyamide base with castors
- ☐ Available with fireproof padding and inner plastic



ARIA BENCH

- ☐ Unrestrained or secured to the ground
- ☐ Available with metal seat and back or upholstered
- ☐ From 2 to 5 seats



ARIA BENCH WITH TABLET

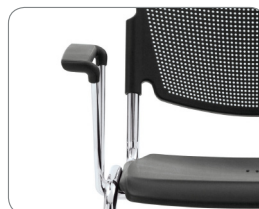
- ☐ Unrestrained or secured to the ground
- ☐ Available with metal seat and back or upholstered
- ☐ From 2 to 4 seats



Options



Tip-up bench
Tip-up seat with spring mechanism.



Fixed armrests
Black painted or chromed fixed armrests.



Retractable tablet
ABS safety retractable tablet.



Long side hook
Chromed steel long side hood.



Magazine rack
Black painted magazine rack.



Transport trolley
Trolley with castors for chairs transport. Stackable up to 15 chairs.



Chromed finiture
Chromed version available for 4-legs frame, swivel base and bench support.



CONFERENZA



Models



CONFERENZA

- ☐ Upholstered back and seat
- ☐ High density cold foamed PU padding
- ☐ Scratchproof seat and back cover



CONFER-WOOD

- ☐ Plywood seat and back
- ☐ Natural varnished



CONFER-NET

- ☐ Polyester mesh and PP structure backrest
- ☐ Cold foamed PU seat padding
- ☐ Scratchproof seat cover



CONFER-PLASTIC

- ☐ Polypropylene back and seat
- ☐ Available in black or blue color



CONFER-ECO

- ☐ Upholstered back and seat
- ☐ Cold foamed PU padding
- ☐ Scratchproof seat and back cover

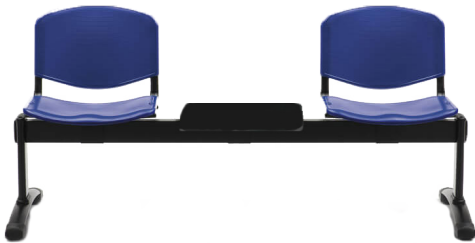
CONFERENZA

Models



CONFERENZA BENCH

- ☐ Chromed or black painted legs
- ☐ Available with plastic wood or upholstered seat and back
- ☐ From 2 to 5 seats



CONFERENZA BENCH WITH TABLET

- ☐ Chromed or black painted legs
- ☐ Available with plastic wood or upholstered seat and back
- ☐ From 2 to 4 seats





Specifications

Options



Retractable tablet
ABS safety retractable tablet.



Chromed finiture
Chromed version for 4-legs frame and bench.



Fixed armrests
Soft PU armrests with metal inner structure.



Side hook
Two sizes painted steel side hood.

Stackable

- CONFERENZA: stackable up to 4
- CONFER-NET: stackable up to 20
- CONFER-ECO: stackable up to 20
- CONFER-PL: stackable up to 20
- CONFER-WOOD: stackable up to 20



UNIVERSAL

Models



UNIVERSAL 4-LEGS FRAME

- ☑ Upholstered back and seat
- ☑ High density cold foamed PU padding
- ☑ Scratch-proof seat and back cover



UNIVERSAL MESH 4-LEGS FRAME

- ☑ Aluminum varnished frame and polyester mesh backrest
- ☑ High density cold foamed seat
- ☑ Scratch-proof seat cover



UNIVERSAL CANTILEVER

- ☑ Upholstered back and seat
- ☑ High density cold foamed PU padding
- ☑ Scratch-proof seat and back cover



UNIVERSAL MESH CANTILEVER

- ☑ Aluminum varnished frame and polyester mesh backrest
- ☑ High density cold foamed seat
- ☑ Scratch-proof seat cover

UNI EN
15373-
2007

UNI EN
1728-
2000

UNI EN
1022-
2005

Specifications



Backrest finiture

Available in two different finiture: upholstered cushion or mesh.



Stackable

Stackable up to 4 chairs even with armrests or tablet.



JOLIE



Specifications



Beechwood frame

Natural painted beechwood frame, available for all models.



Chromed frame

Chromed steel frame with soft spacers for stacking, available for all models.

JOLIE

Models



JOLIE

- ☑ Scratchproof shell with reinforced polypropylene
- ☑ Chromed frame
- ☑ Soft spacers for stacking
- ☑ 3 colors available: black, taupe, white



JOLIE

- ☑ Scratchproof shell with reinforced polypropylene
- ☑ Beechwood frame
- ☑ 3 colors available: black, taupe, white



JOLIE WITH CUSHION

- ☑ Scratchproof shell with reinforced polypropylene
- ☑ Upholstered cushion
- ☑ Chromed frame
- ☑ Soft spacers for stacking
- ☑ 3 colors available: black, taupe, white



JOLIE WITH CUSHION

- ☑ Scratchproof shell with reinforced polypropylene
- ☑ Upholstered cushion
- ☑ Beechwood frame
- ☑ Soft spacers for stacking
- ☑ 3 colors available: black, taupe, white



JOLIE UPHOLSTERED

- ☑ Upholstered with reinforced polypropylene inner shell
- ☑ Chromed frame
- ☑ Soft spacers for stacking



JOLIE UPHOLSTERED

- ☑ Upholstered with reinforced polypropylene inner shell
- ☑ Beechwood frame



JOLIE BENCH WITH CUSHION

- ☒ Scratchproof shell with reinforced polypropylene
- ☒ Upholstered cushion
- ☒ From 2 to 5 seats
- ☒ Available with black polyamide or chromed steel legs
- ☒ Occasional table available
- ☒ 3 colors available seat: black, taupe, white



JOLIE BENCH

- ☒ Scratchproof shell with reinforced polypropylene
- ☒ From 2 to 5 seats
- ☒ Available with black polyamide or chromed steel legs
- ☒ Occasional table available
- ☒ 3 colors available seat: black, taupe, white



JOLIE

Models



JOLIE SWIVEL

- ☑ Scratchproof shell with reinforced polypropylene
- ☑ Height adjustable
- ☑ Polyamide base with soft castors
- ☑ 3 colors available: black, taupe, white



JOLIE SWIVEL WITH CUSHION

- ☑ Scratchproof shell with reinforced polypropylene
- ☑ Upholstered cushion
- ☑ Height adjustable
- ☑ Polyamide base with soft castors
- ☑ 3 colors available: black, taupe, white



JOLIE SWIVEL B24 WITH CUSHION

- ☑ Scratchproof shell with reinforced polypropylene
- ☑ Upholstered cushion
- ☑ Height adjustable
- ☑ Polyamide flat base with soft castors
- ☑ 3 colors available: black, taupe, white



JOLIE STEEL SWIVEL

- ☑ Scratchproof shell with reinforced polypropylene
- ☑ Height adjustable
- ☑ Painted steel base with soft castors
- ☑ 3 colors available: black, taupe, white



JOLIE STEEL SWIVEL WITH CUSHION

- ☑ Scratchproof shell with reinforced polypropylene
- ☑ Upholstered cushion
- ☑ Height adjustable
- ☑ Painted steel base with soft castors
- ☑ 3 colors available: black, taupe, white



JOLIE UPHOLSTERED STEEL SWIVEL

- ☑ Upholstered with reinforced polypropylene inner shell
- ☑ Height adjustable
- ☑ Painted steel base with soft castors
- ☑ 3 colors available: black, taupe, white



**JOLIE STEEL 4 LEGS
FRAME**

- ☑ Scratchproof shell with reinforced polypropylene
- ☑ Height adjustable
- ☑ Painted steel base with 4 legs
- ☑ 3 colors available: black, taupe, white



**JOLIE STEEL 4 LEGS
FRAME WITH CUSHION**

- ☑ Scratchproof shell with reinforced polypropylene
- ☑ Upholstered cushion
- ☑ Height adjustable
- ☑ Painted steel base with 4 legs
- ☑ 3 colors available: black, taupe, white



**JOLIE UPHOLSTERED
STEEL 4 LEGS FRAME**

- ☑ Upholstered with reinforced polypropylene inner shell
- ☑ Height adjustable
- ☑ Painted steel base with 4 legs
- ☑ 3 colors available: black, taupe, white





CHLOE'



Specifications



Beechwood frame

Natural painted beechwood frame, available for all models.

Chromed frame

Chromed steel frame, available for all models.

CHLOÉ'

Models



CHLOÉ

- ▣ Scratchproof shell with reinforced polypropylene
- ▣ Chromed frame
- ▣ 3 colors available: black, taupe, white



CHLOÉ

- ▣ Scratchproof shell with reinforced polypropylene
- ▣ Beechwood frame
- ▣ 3 colors available: black, taupe, white.



CHLOÉ WITH CUSHION

- ▣ Scratchproof shell with reinforced polypropylene
- ▣ Upholstered cushion
- ▣ Chromed frame
- ▣ 3 colors available: black, taupe, white



CHLOÉ WITH CUSHION

- ▣ Scratchproof shell with reinforced polypropylene
- ▣ Upholstered cushion
- ▣ Beechwood frame
- ▣ Soft spacers for stacking
- ▣ 3 colors available: black, taupe, white



CHLOÉ UPHOLSTERED

- ▣ Upholstered with reinforced polypropylene inner shell
- ▣ Chromed frame



CHLOÉ UPHOLSTERED

- ▣ Upholstered with reinforced polypropylene inner shell
- ▣ Beechwood frame



CHLOÉ BENCH WITH CUSHION

- ☑ Scratchproof shell with reinforced polypropylene
- ☑ Upholstered cushion
- ☑ From 2 to 5 seats
- ☑ Available with black polyamide or chromed steel legs
- ☑ Occasional table available
- ☑ 3 colors available seat: black, taupe, white



CHLOÉ BENCH

- ☑ Scratchproof shell with reinforced polypropylene
- ☑ From 2 to 5 seats
- ☑ Available with black polyamide or chromed steel legs
- ☑ Occasional table available
- ☑ 3 colors available seat: black, taupe, white



CHLOÉ'

Models



CHLOÉ STEEL 4 LEGS FRAME

- ☑ Scratchproof shell with reinforced polypropylene
- ☑ Height adjustable
- ☑ Painted steel base with 4 legs
- ☑ 3 colors available: black, taupe, white



CHLOÉ SWIVEL

- ☑ Scratchproof shell with reinforced polypropylene
- ☑ Upholstered cushion
- ☑ Height adjustable
- ☑ Polyamide base with soft castors
- ☑ 3 colors available: black, taupe, white



CHLOÉ STEEL 4 LEGS FRAME WITH CUSHION

- ☑ Scratchproof shell with reinforced polypropylene
- ☑ Height adjustable
- ☑ Painted steel base with 4 legs
- ☑ 3 colors available: black, taupe, white



CHLOÉ SWIVEL WITH CUSHION

- ☑ Scratchproof shell with reinforced polypropylene
- ☑ Height adjustable
- ☑ Painted steel base with soft castors
- ☑ 3 colors available: black, taupe, white



CHLOÉ UPHOLSTERED STEEL 4 LEGS FRAME

- ☑ Scratchproof shell with reinforced polypropylene
- ☑ Height adjustable
- ☑ Painted steel base with 4 legs
- ☑ 3 colors available: black, taupe, white



CHLOÉ UPHOLSTERED SWIVEL

- ☑ Upholstered with reinforced polypropylene inner shell
- ☑ Height adjustable
- ☑ Painted steel base with soft castors
- ☑ 3 colors available: black, taupe, white





VERA



Models

Specifications



VERA 4-LEGS FRAME

- ☑ Polypropylene shell
- ☑ Chromed steel cantilever
- ☑ Stackable up to 20 chairs



High durable
New polypropylene 30% more resistant.



VERA SWIVEL

- ☑ Polypropylene shell
- ☑ Soft castors
- ☑ Adjustable in height

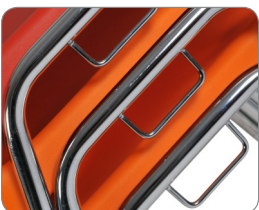


Stackable
Stackable up to 20 chairs.



Soft castor
Soft PU castors suitable for all types of floor.

Options



Connecting hooks

Available with connecting hooks frame



Models



SOLE

- ☐ Polypropylene back and seat
- ☐ Chromed steel cantilever
- ☐ Stackable up to 6 chairs

SOLE



Models



SILLA

- ☐ Plywood inner shell
- ☐ PU upholstered
- ☐ Upholstered armrests
- ☐ Chromed steel cantilever
- ☐ Anti-tilt rubber feet

SILLA



Models



GIMMY 4-LEGS FRAME

- ☐ Polypropylene shell
- ☐ Chromed steel frame
- ☐ Stackable up to 20 chairs



GIMMY SWIVEL

- ☐ Polypropylene shell
- ☐ Soft castors
- ☐ Adjustable in height

GIMMY



Models



ELENA

- ☐ Polypropylene shell
- ☐ Chromed steel frame
- ☐ Stackable up to 20 chairs

ELENA



MISS



Models



MISS WITH CUSHION

- ☑ PU foamed padding
- ☑ Scratchproof shell with reinforced polypropylene
- ☑ Wood effect reinforced polyamide legs
- ☑ Stacking soft spacers



MISS

- ☑ Scratchproof shell with reinforced polypropylene
- ☑ Wood effect reinforced polyamide legs
- ☑ Stacking soft spacers

Specifications



Multiple colors

Available in 6 different seat colors e 2 legs variations



Scratch-proof glides

Special rubber designed to last over time even with rough surfaces.



Stackable

Stackable up to 12 chairs



Indoor/Outdoor

Indoor and outdoor

Reinforced and UV stabilized shell and legs for outdoor use



Models



PUNTO

- ☐ Polypropylene seat and back
- ☐ Soft castors
- ☐ Seat adjustable in height
- ☐ Back adjustable in height and depth
- ☐ No tools required for assembly

PUNTO



Models



GUM

- ☐ Polypropylene back and seat
- ☐ Chromed steel frame
- ☐ Stackable up to 8 chairs

GUM



PARIS



Models



PARIS (1P)

- ☑ Inner wood structure
- ☑ Non-deformable PU padding
- ☑ Chromed steel furniture legs



PARIS (2P)

- ☑ Inner wood structure
- ☑ Non-deformable PU padding
- ☑ Chromed steel furniture legs



PARIS (3P)

- ☑ Inner wood structure
- ☑ Non-deformable PU padding
- ☑ Chromed steel furniture legs

Options



Chromed steel frame

Available with an elegant chromed steel frame.



MAX



Models



MAX (1P)

- ☒ Inner wood structure
- ☒ Non-deformable PU padding
- ☒ Chromed steel furniture legs



MAX (2P)

- ☒ Inner wood structure
- ☒ Non-deformable PU padding
- ☒ Chromed steel furniture legs



MAX (3P)

- ☒ Inner wood structure
- ☒ Non-deformable PU padding
- ☒ Chromed steel furniture legs

Specifications



Elegant finiture
High quality details.



DUKE



Models



DUKE (1P)

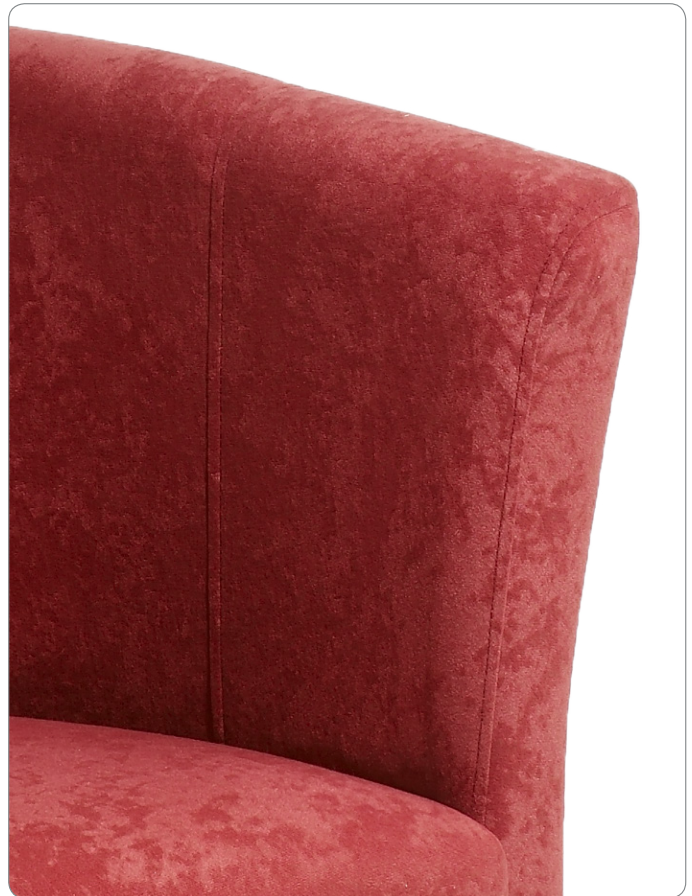
- ☒ Inner wood structure
- ☒ Non-deformable PU padding
- ☒ Chromed steel furniture legs



DUKE (2P)

- ☒ Inner wood structure
- ☒ Non-deformable PU padding
- ☒ Chromed steel furniture legs

Specifications



Multiple finishes

Wide selection of leathers available.

FABRICS AND COLORS

CAGLIARI Cat. D



C002

C006

C011

C038

C013

C034

COMPOSITION

50% PES, 40% PAC and 10% synthetic fibre

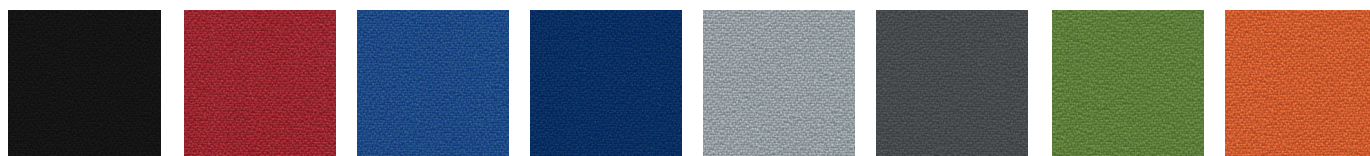
ABRASION (Martindale)

25.000 Rubs

WEIGHT

380 g/ml - 270 g/m²

BONDAI Cat. C



B833

B411

B671

B615

B878

B810

B748

B312

COMPOSITION

100% Polyester

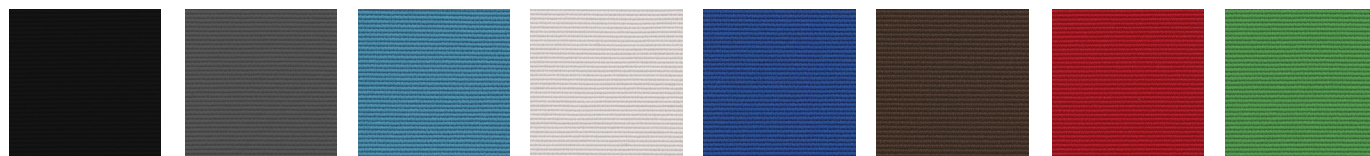
ABRASION (Martindale)

150.000 Rubs

WEIGHT

350 g/ml - 250 g/m²

ERIKA Cat. B



E833

E803

E607

E111

E671

E236

E427

E713

COMPOSITION

100% Polyester

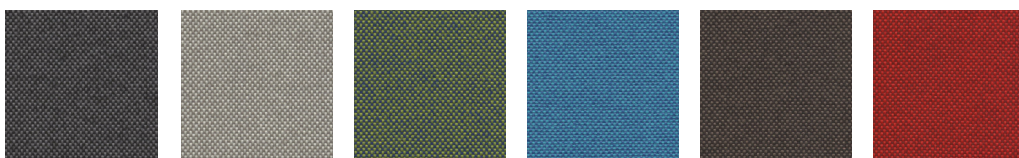
ABRASION (Martindale)

70.000 Rubs

WEIGHT

310 g/ml - 220 g/m²

TORINO Cat. A



T918

T901

T917

T606

T912

T904

COMPOSITION

100% Polyester Trevira CS

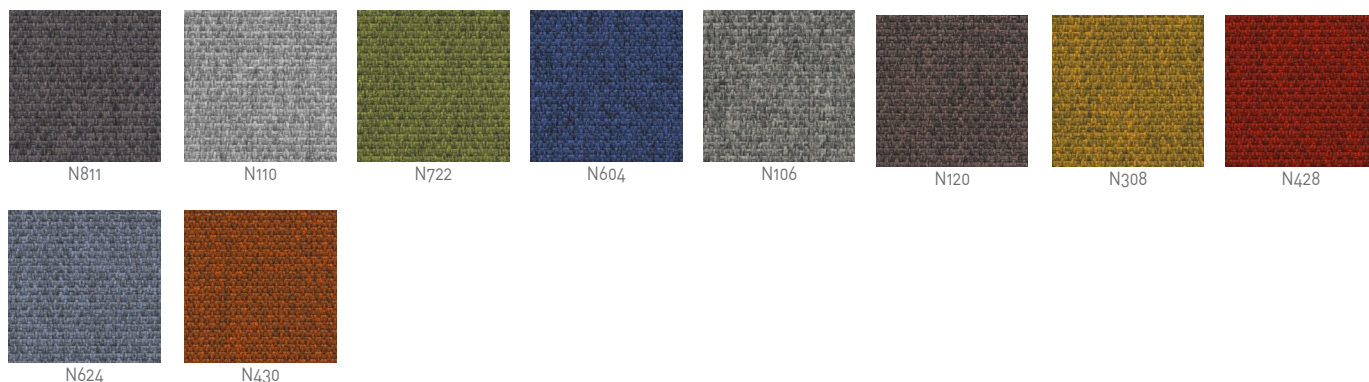
ABRASION (Martindale)

70.000 Rubs

WEIGHT

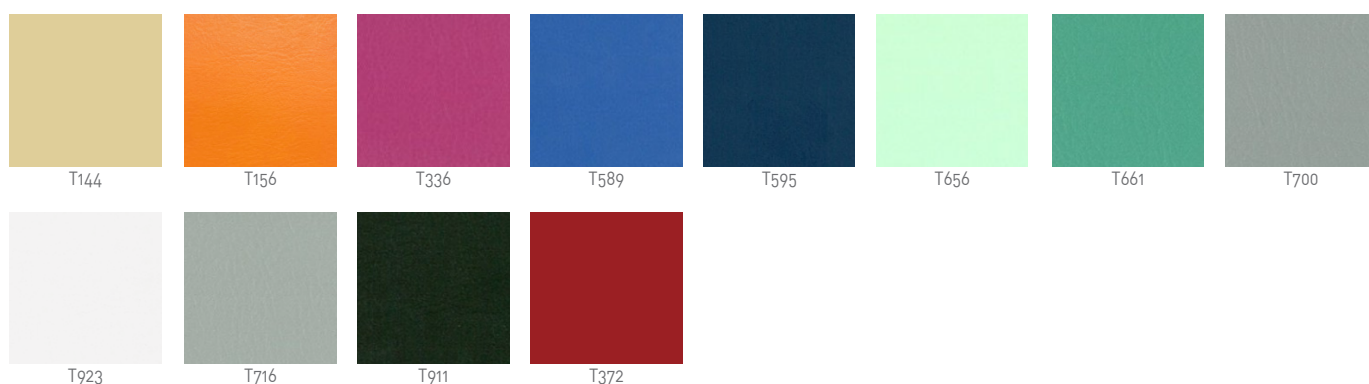
365 g/ml - 260 g/m²

MINI Cat. A



COMPOSITION	ABRASION (Martindale)	WEIGHT
100% Polyester Trevira CS	100.000 Rubs	480 g/ml - 340 g/m ²

Leatherette TODO



COMPOSITION	ABRASION (Martindale)	WEIGHT
PVC 100%, Cotton Baking 100%	50.000 Rubs	408 g/ml - 290 g/m ²

Leatherette Cat. C - Leatherette Cat. B

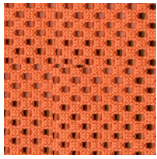


 Leatherette Cat.C (standard)

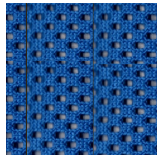
 Leatherette Cat.B (fireproof)

COMPOSITION	ABRASION (Martindale)	WEIGHT
PVC 82%, Cotton Baking 7% and PES 11%	50.000 Rubs	790 g/ml - 565 g/m ²

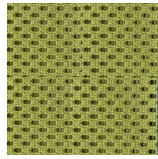
Mesh MICRO



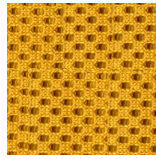
RCI24



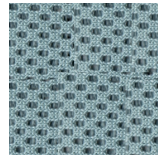
RCI29



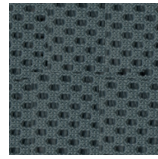
RCI22



RCI16



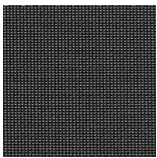
RCI23



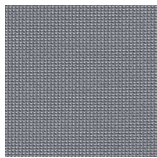
RCI26

COMPOSITION	ABRASION (Martindale)	WEIGHT
100% Polyester	80.000 Rubs	525 g/ml - 350 g/m ²

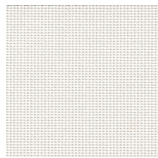
Mesh MUST



RM101



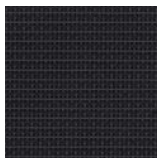
RM104



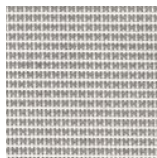
RM102

COMPOSITION	ABRASION (Martindale)	WEIGHT
100% Polyester	50.000 Rubs	460 g/ml - 385 g/m ²

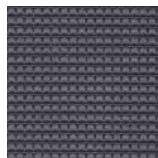
Covering mesh BAVIERA Cat. A



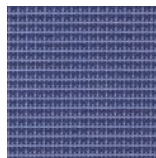
X690



X215



X697



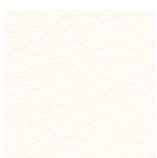
X447

COMPOSITION	ABRASION (Martindale)	WEIGHT
65% PVC, PES 35%	200.000 Rubs	715 g/ml - 510 g/m ²

Leather



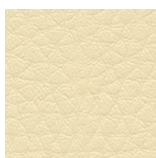
P01



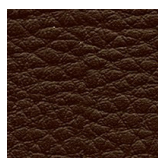
P02



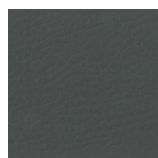
P03



P04



P07



P13



P40



P45

COMPOSITION	ABRASION (Martindale)	WEIGHT
100% Bovine leather	/	0.9/1.0 mm (thickness)

MISS - shell and legs colors



CHLOÉ/JOLIE - shell colors



LUNA - back and seat colors



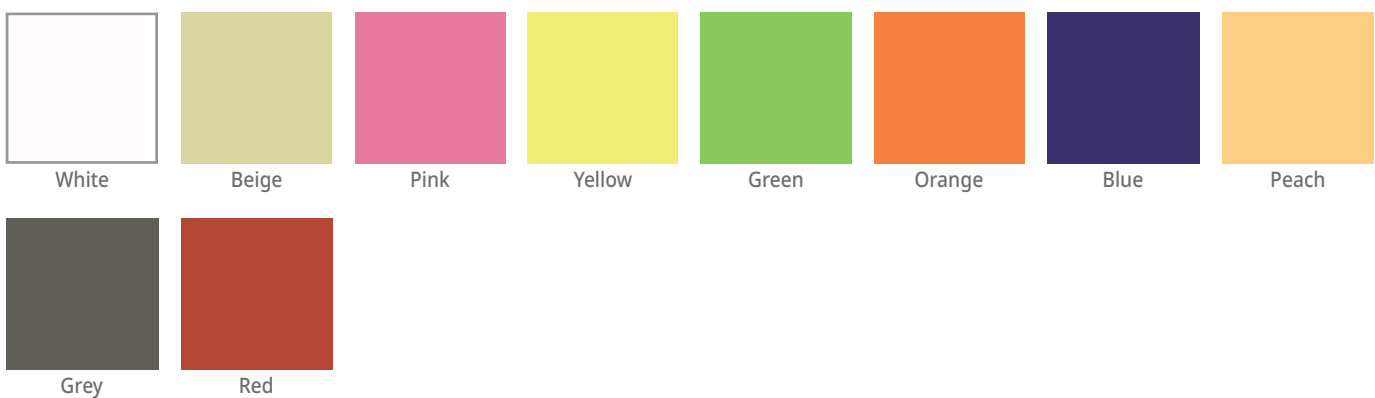
SOLE - shell colors



GIMMY - shell colors



GUM/PUNTO - back and seat colors



COMPONENTS



Z05 GLIDES
PP glide with Ø11 push-in stem



CHROMED SOFT CASTORS
Ø65 mm, fast coupling pivot Ø11.
Free or self-braking



Z10 GLIDES
PP glide with Ø11 push-in stem



WHITE SOFT CASTORS
Ø65 mm, fast coupling pivot Ø11
Free or self-braking



BLACK CASTORS
Ø50 mm, fast coupling pivot Ø11.
Free or self-braking



GREY SOFT CASTORS
Ø65 mm, fast coupling pivot Ø11
Free or self-braking



BLACK SOFT CASTORS
Ø50 mm, fast coupling pivot Ø11.
Free or self-braking



B03-B04
30% FV nylon base, Ø 50 central cone with taper anti-slipping of the lift., castors pivot Ø 11, same design, different dimensions



GREY SOFT CASTORS
Ø 50 mm, fast coupling pivot Ø11.



B20 - B21 - B22
30% FV nylon base, Ø 50 central cone, castors pivot Ø 11, same design, different dimensions



BLACK CASTORS
Ø65 mm, fast coupling pivot Ø11.
Free or self-braking



B23
30% FV nylon pyramidal base, Ø 50 central cone with steel ring, castors pivot Ø 11, only Ø 700 mm



BLACK SOFT CASTORS
Ø65 mm, fast coupling pivot Ø11
Free or self-braking



B07
30% FV nylon pyramidal base, Ø 50 central cone with steel ring, castors pivot Ø 11, only Ø 700 mm



CHROMED CASTORS
Ø65 mm, fast coupling pivot Ø11.
Free or self-braking



B24 - B25
30% FV nylon base, Ø 50 central cone, castors pivot Ø 11, same design, different dimensions



B03
Polished aluminum base, cone
Ø50, stem Ø11, Ø640 mm



PP05TRS
Synchro mechanism, 4-position block
with tension adjustment and sliding
seat- EN1335 TESTED



B03
Polished aluminum base, cone
Ø50, stem Ø11, Ø640 mm



PP30
Synchro mechanism, 4-positions
block with tension adjustment



B04
Polished aluminum base, inner cone
Ø50, stem Ø11, Ø700 mm



PP30TRS
Synchro mechanism, 4-positions
block with tension adjustment and
sliding seat



B23
Polished aluminum base, cone
Ø50, stem Ø11, Ø700 mm



PP23
Back System mechanism (permanent
contact) with practical lever lock and
UP-DOWN backrest



B25
Polished aluminum base, cone Ø50,
stem Ø11, Ø700 mm



PP29
A-synchro mechanism, with
multi-positions lever lock and
UP-DOWN backrest



PP12
Sliding seat for Permanent Contact,
Back System and A-Synchro chairs



PP40 - PP40TRS
Synchro mechanism, 4-positions
block, self-weighting, with automatic
tension adjustment.
TRS (sliding seat) adjustment



PP41
Forward pivot tilt mechanism,
3 blocks with tension adjustment



PP13
Tilt mechanism with tension
adjustment. Lock/unlock lever



PP05
Synchro mechanism, 4-position block
with tension adjustment - EN1335
TESTED



PP16
Advanced tilt mechanism with
tension adjustment. Lock/unlock
lever



BR03
 Pair of ambidextrous armrests,
 printed in black polypropylene



BR29
 Pair of right and left armrests adjust-
 able in height, black or chromed
 support, polyamide GF. Soft PU black
 pad



BR10
 Pair of left and right armrests, black
 polypropylene FV printed



BR50
 Pair of right and left 4D adjustable
 armrests in height and width, depth
 and swivel. Soft PU black pad



BR12
 Pair of left and right armrests, black
 polypropylene FV printed



BR51
 Pair of right and left 3D adjustable
 armrests in height, depth and swivel.
 Soft PU black pad



BR18
 Pair of left and right armrests, black
 polyamide FV printed
 Soft integral polyurethane Pad



R501
 Height adjustable footrest ring, with
 lever lock, Ø45 cm



BR27
 Pair of left and right armrests, black
 polyamide FV printed, pad in black
 polypropylene



GAS LIFT:
 -h240 course 130 mm
 -h205 course 100 mm
 -h240 course 130 mm
 -h375 course 260 mm
 -h300 course 200 mm
 -h220 course 130 mm



BR13
 Pair of right and left armrests adjustable
 in height, black or chromed
 support, polyamide GF. Polypropylene
 black pad



CHROMED GAS LIFT:
 -h215 course 120 mm
 -h220 course 130 mm
 -h375 course 260 mm



BR26
 Pair of right and left armrests adjust-
 able in height, black or chromed
 support, polyamide GF. Polypropyl-
 ene black pad



BR28
 Pair of right and left armrests adjustable
 in height, black or chromed
 support, polyamide GF. Polypropylene
 black pad

